

Step 4: Install Cord Safety Device

The Cord Safety Device keeps the Cord secure and reduces the risk of strangulation. The Cord Safety Device is pre-installed on the Cord.

Install the Cord Safety Device in a location that keeps the Cord tight (see Fig. K).

If a wood stud is not available, you will need to use an anchor (not included). See your local hardware store for more information.



Figure K

Moving Cord to left side of the shade

Your shade is already prepared for the Cord to be located on the right side of the shade. If you want to move the Cord to the left side of the shade, you will need to rotate the metal disc in the Plug Bracket (Fig L).

No change is needed to the Clutch Bracket, you only need to rotate the Clutch so the Cord hangs down, towards the ground.

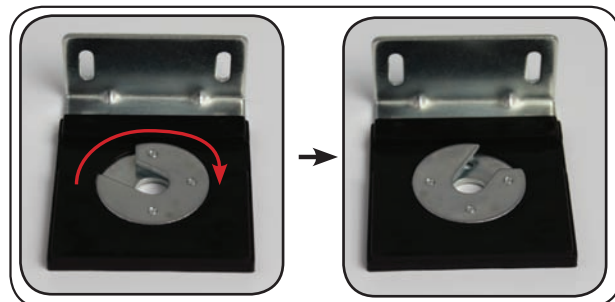


Figure L

Securing your shade

Your shade has Bottom Rail Rings pre-installed on the Bottom Rail. These rings can be used to secure your shade during slightly windy conditions. You may use a screw, nail, S-hook, or any other device to secure your shade.

Always roll your shade up during windy conditions.

Maintenance

To clean your shade simply rinse with water and scrub with any non-abrasive cleaner (using bleach or other abrasive cleaners will void your warranty). Roll the shade down to air dry.

Don't forget to send us your warranty/registration card.

www.keystonefabrics.com

303.652.6164 (p)

M1001-E

Corded Shade with PE Fabric INSTALLATION INSTRUCTIONS



Figure A

Note: your parts and fabric may differ in color than shown in this manual

Description	Part Number	Qty Included
Clutch Bracket	CB9	1
Plug Bracket	PB9	1
Bracket Cover	BC9	2
Clutch with cord (pre-installed)	C9	1
Plug with pin (pre-installed)	P9	1
Bottom Rail (pre-installed)	BR9	1
Bottom Rail Caps (pre-installed)	BRC9	2
Fabric	F9	1
Screws (not shown)	SCR9	5
Cord Safety Device	CSD9	1
Bottom Rail Ring (pre-installed)	BRR9	2

Tools required: phillips screwdriver, leveling device (laser level, standard level, etc.), and power drill (if pre-drilling the holes).

Your shade can be installed against a wall (Fig B) or against a ceiling/overhang (Fig C). Your shade is already prepared for either installation; no changes to the brackets are necessary.



Figure B



Figure C

Step 1: Mark holes for installation

Before you can hang your solar shade, it will help to mark the holes where you will put your screws. Figure D will help you determine where your holes should be located.

Shade Type	Fabric width	Screw to screw measurement	Total width (installed)	Approximate weight
4' x 6'	46.10" (117.1 cm)	46.65" (118.5 cm)	48" (121.9 cm)	3.1 lbs (1.41 kgs.)
6' x 6'	70.12" (178.1 cm)	70.67" (179.5 cm)	72" (182.9 cm)	4.3 lbs (1.95 kgs.)
8' x 6'	94.09" (239 cm)	94.65" (240.4 cm)	96" (243.8 cm)	5.6 lbs (2.54 kgs.)
10' x 6'	118.11" (300 cm)	118.66" (301.4 cm)	120" (304.8 cm)	6.8 lbs (3.09 kgs.)

Figure D

Be sure to mount the brackets to a wood stud. If a wood stud cannot be located, an anchor must be used (not included). Visit your local hardware store for more information.

IMPORTANT: if you are installing against a wall, you must leave approximately 1 1/2" clearance above the brackets to allow the shade to slide into the Plug Bracket (Fig E).



Figure E

Step 2: Install brackets

Remove the Bracket Covers from both Brackets, then secure the Clutch Bracket and Plug Bracket with the provided wood screws (see Fig. F).

Do **not** replace the Bracket Covers at this time.



Figure F

Step 3: Install solar shade

To install your shade, start by attaching the Clutch (with cord) to the Clutch Bracket (Fig G). Note: make sure the cord hangs down, towards the ground.

Next, slide the Plug with pin into the Plug Bracket. Note: the Plug (with pin) should slide into the metal disc on the Plug Bracket (Fig H).



Figure G

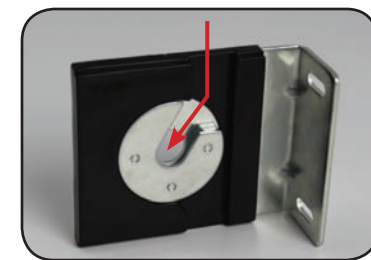


Figure H

If your shade moves side-to-side, you may want to adjust the brackets to reduce any movement between the shade and the brackets.

To prevent your shade from moving from side-to-side, roll your shade down and loosen the screws slightly. Push the brackets in, towards the shade and retighten screws. (Fig J)

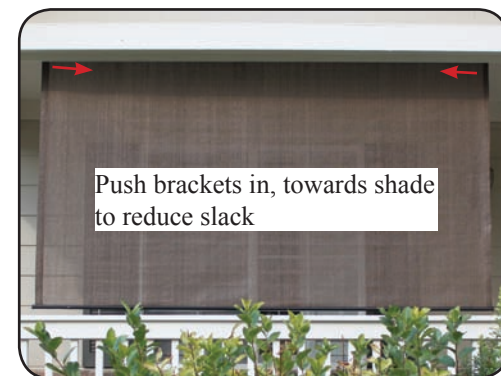


Figure J

Now re-install the Bracket Covers.