

Step 4: Install Cord Safety Device

The Cord Safety Device keeps the Cord secure and reduces the risk of strangulation. This is a very important step, we strongly recommend that you utilize your Cord Safety Device. **Note: You must install this device for your shade to work properly** The Cord Safety Device is pre-installed on the Cord.



Figure L

Make sure the cord is tight before you secure the Cord Safety Device. To secure the Cord Safety Device, drill two (2) Cord Safety Device Screws into a wall/post (Fig L). If a wood stud is not available, you will need to use an anchor (not included). See your local hardware store for more information. Note: Your Cord Safety Device may look different than the one pictured in figure L. The installation process however, is the same.

Moving Cord to left side of the shade

Your shade is already prepared for the Cord to be located on the right side of the shade. If you want to move the Cord to the left side of the shade, remove the plug bracket cover (Fig M.), loosen the screws. Then you will need to rotate the metal disc in the Plug Bracket (Fig N). Tighten the screws then replace the plug bracket

No change is needed to the Clutch Bracket, you only need to rotate the Clutch so the Cord hangs down, towards the ground. You are now ready to install you shade with the cord on the left side.

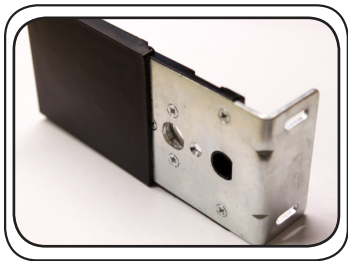


Figure M

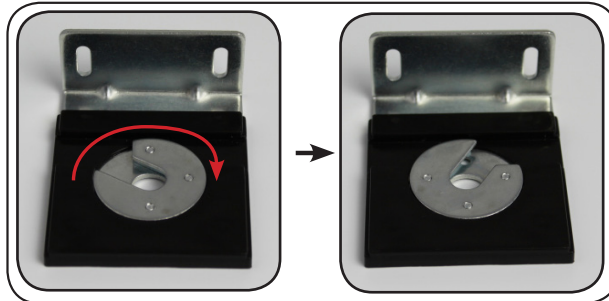


Figure N

Securing your shade

Your shade has Bottom Rail Rings pre-installed on the Bottom Rail. These rings can be used to secure your shade during slightly windy conditions. You may use a screw, nail, S-hook, or any other device to secure your shade. (Fig O)



Figure O

Maintenance

To clean your shade simply rinse with water and scrub with any non-abrasive cleaner (using bleach or other abrasive cleaners will void your warranty). Roll the shade down to air dry.

Don't forget to send us your warranty/registration card.

Exterior Corded Sun Shade with PE Fabric

INSTALLATION INSTRUCTIONS



Figure A

Note: your parts and fabric may differ in color than shown in this manual

Description	Part Number	Qty Included
Clutch Bracket	CB9	1
Plug Bracket	PB9	1
Bracket Cover	BC9	2
Clutch with cord (pre-installed)	C9	1
Plug with pin (pre-installed)	P9	1
Bottom Rail (pre-installed)	BR9	1
Bottom Rail Caps (pre-installed)	BRC9	2
Fabric	F9	1
Screws (not shown)	SCR9	6
Cord Safety Device	CSD17	1
Bottom Rail Ring (pre-installed)	BRR9	2

Tools required: phillips screwdriver, leveling device (laser level, standard level, etc.), and power drill (if pre-drilling the holes).

Your shade can be installed against a wall (Fig B) or against a ceiling/overhang (Fig C). Your shade is already prepared for either installation; no changes to the brackets are necessary.

WALL MOUNT



Figure B

CEILING MOUNT



Figure C

Step 1: Mark holes for installation

Before you can hang your solar shade, it will help to mark the holes where you will put your screws. Figure D will help you determine where your holes should be located.

Shade Type	Fabric width	Screw to screw measurement	Total width (installed)	Approximate weight
4' x 6'	46.10" (117.1 cm)	46.65" (118.5 cm)	48" (121.9 cm)	3.1 lbs (1.41 kgs.)
6' x 6'	70.12" (178.1 cm)	70.67" (179.5 cm)	72" (182.9 cm)	4.3 lbs (1.95 kgs.)
8' x 6'	94.09" (239 cm)	94.65" (240.4 cm)	96" (243.8 cm)	5.6 lbs (2.54 kgs.)
10' x 6'	118.11" (300 cm)	118.66" (301.4 cm)	120" (304.8 cm)	6.8 lbs (3.09 kgs.)

Figure D

If a template has been provided, you can use it to help position your pilot holes. Start by temporarily attaching your template to your mounting surface (Fig. E). Then drill your pilot holes in the four marked dark zones (ideally in the center of each dark zone) (Fig f).

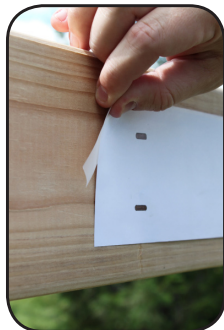


Figure E

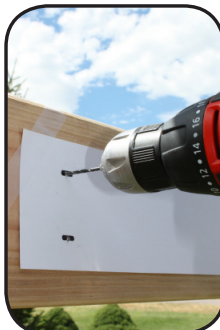


Figure F

Be sure to mount the brackets to a wood stud. If a wood stud cannot be located, an anchor must be used (not included). Visit your local hardware store for more information.

IMPORTANT: if you are installing against a wall, you must leave approximately 1 1/2" clearance above the brackets to allow the shade to slide into the Plug Bracket (Fig G).

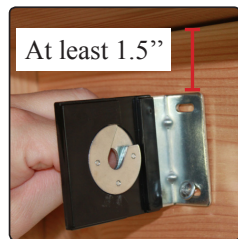


Figure G

Step 2: Install brackets

Remove the Bracket Covers from both Brackets, then secure the Clutch Bracket and Plug Bracket with the provided wood screws (see Fig. H). Note: the Clutch Bracket should be installed on the right side of the shade. The Plug Bracket is designed to be placed on the left side of the shade. Please see page 4 of this manual if you prefer to place your Clutch Bracket on the right side.

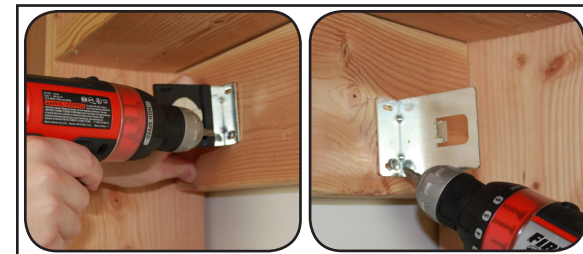


Figure H

Do not replace the Bracket Covers at this time.

Step 3: Install solar shade

To install your shade, start by attaching the Clutch (with cord) to the Clutch Bracket (Fig I). Note: make sure the cord hangs down, towards the ground.

Next, slide the Plug with pin into the Plug Bracket. Note: the Plug (with pin) should slide into the metal disc on the Plug Bracket (Fig J).



Figure I

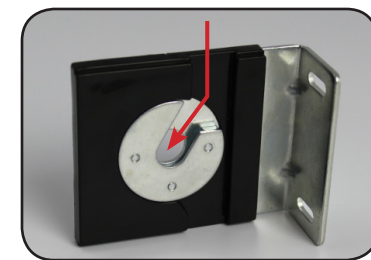


Figure J

If your shade moves side-to-side, you may want to adjust the brackets to reduce any movement between the shade and the brackets.

To prevent your shade from moving from side-to-side, roll your shade down and loosen the screws slightly. Push the brackets in, towards the shade and retighten screws. (Fig K)

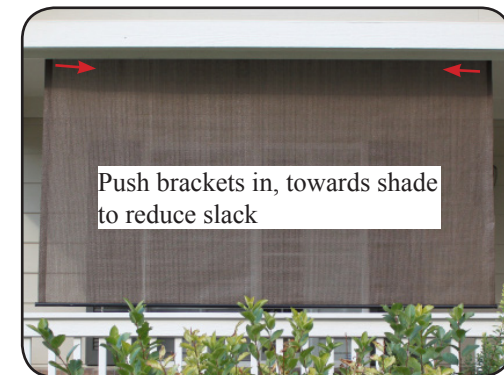


Figure K

Now re-install the Bracket Covers.